

# CHAMBER NEWS

## PRATT AREA CHAMBER OF COMMERCE

### PRATT FEATURED AT KANSAS SAMPLER FESTIVAL

The 20th annual Kansas Sampler Festival came to a close just before the rain started.

"The line of visitors to the South Central Kansas Tourism Region's booth was steady up until the very end," said Amy Govert-Larson, office manager for the Pratt Area Chamber of Commerce. "The threat of rain didn't dampen anyone's eagerness to learn more about Pratt County or the other communities represented during the festival."

Over 5,000 attended the festival in Concordia's city park, May 2-3. The Kansas celebration included 135 communities promoting their own day trips, entertainment, food, products and history.

"As a member of the South Central Kansas Tourism Region, Pratt was represented alongside communities like Anthony, Winfield and Newton," said Brian Hoffman, executive director of Pratt Area Chamber of Commerce. "Partnering with others in our region allowed us to share resources to best represent our respective communities."

In addition to information pertaining to each individual community, the tourism region passed out 500 recyclable shopping bags during the two-day event.

"The bags were very, very popular," said Hoffman.

So, too, was Miss Kansas.

"Emily Deaver spent part of Saturday with us," said Hoffman. "The visitors to our tent really enjoyed meeting Miss Kansas."

The festival is a project of the Kansas Sampler Foundation.

"Exhibitors were very pleased with the steady flow of interested people and, as it is every year, the most familiar audience reaction was surprise to all that Kansas has to offer," said Marci Penner, director of Kansas Sampler Foundation.

Leavenworth County will be the host for the 2010 and 2011 event.

### GIRL'S NIGHT OUT A SUCCESS

Pratt merchants rolled out the red carpet for shoppers during Girl's Night Out, April 30.

"The participating businesses went all out," said Brian Hoffman, executive director of the Pratt Area Chamber of Commerce. "Their enthusiasm was contagious and made for a great night."

Nearly 200 women visited downtown Pratt over the course of the evening. With more business participation than ever before, ladies had more opportunities to shop, save and win.

"We had a great turnout and ladies took advantage of the specials that we had," said Terri Siroky, owner of Simply Southwest. "That really made it worth their while to come out."

For the first time, Club D'Est joined participating mer-

chants in offering special discounts to Girl's Night Out shoppers.

"[Girl's Night Out] went well. We had quite a few ladies in," said Becky Eastes, owner of Club D'Est. "It was a fun night and we'd like to do it again."

In addition to the specials available from each merchant, shoppers registered to win a giveaway from each business.

Arlene Seronce, Pratt, won a free month membership to Bodies Elite Gym & Fitness after registering with her daughter.

"We walked [downtown] together," said Seronce. "We had a nice time."

Kim Howe, Pratt, received the \$150 Chamber Gift Certificate awarded by the businesses.

Current Chamber  
Membership: 250

#### INSIDE THIS ISSUE:

<b>MESSAGE FROM BRIAN</b>	<b>2</b>
<b>MEMBER NEWS</b>	<b>2</b>
<b>FINALLY FRI- DAY!</b>	<b>3</b>
<b>SAVE THE DATE</b>	<b>4</b>

**PLEASE SHARE  
THE CHAMBER  
NEWS WITH  
YOUR STAFF!**

## MESSAGE FROM BRIAN

I have heard time and again how people enjoy receiving the CHAMBER E-BLAST!. The Pratt Area Chamber of Commerce is committed to communicating with our members and to encouraging our members to communicate with one another. Communication is a vital component to any business or organization and our office is constantly looking for innovative ways to improve the communication to our members and between our members.

One of the many benefits of being a chamber member is that you can promote your business or organization through the many promotional opportunities available at the chamber. I would like to encourage all of you to promote

your businesses or organizations through the *Chamber News*, CHAMBER E-BLAST!, online Community Calendar and our Web site, [prattkan.com](http://prattkan.com).

Over 250 individuals, business and community leaders receive our monthly or weekly forms of communication. If you would like to receive information about how you can promote your business or organization please contact our office at (620) 672-5501 or [info@prattkan.com](mailto:info@prattkan.com).

• *Brian Hoffman is the executive director of the Pratt Area Chamber of Commerce. He can be reached at [brianh@prattkan.com](mailto:brianh@prattkan.com).*

## MEMBER NEWS IN THE CHAMBER NEWS

### PILR to Conference in D.C.

Independent Living Specialists Roger Frischenmeyer and Billy Thompson of Prairie Independent Living Resource (PILR) Center have been chosen to present at the National Council on Independent Living (NCIL) Annual Conference 2009 in Washington D.C., June 5-8. Garrett Hamm, PILR volunteer will also attend as a co-presenter.

PILR's presentation, "T.E.E.N.S. (Tools to Empower and Educate from a New Standpoint for Independent Living)," is based on the organization's successful development and cultivation of Disability Mentoring Day, Global Youth Service Day, Job-A-Thon and Student Advocacy Day Workshops based in Reno and Pratt counties.

### Senior Olympics to Pratt

Pratt Rehabilitation and Residence Center will host the Senior Olympics, June 26. The day will include friendly competition between other nursing facilities in south central Kansas with some 200 residents, volunteers and staff expected to participate in the event.

Pratt Rehabilitation and Residence Center is currently securing monetary donations to help with lunch, medals and door prizes and volunteers to assist with the event. For more information, please contact Renae Kersenbrock at (620) 450-1777.

*Tell us what's happening in your office, (620) 672-5501 or [info@prattkan.com](mailto:info@prattkan.com).*

## BOARD OF DIRECTORS

### *President*

**Kelly McDermeit**

Pratt Regional Medical Center

### *President-Elect*

**Kurt McAfee**

Pratt Community College

### *Secretary*

**Mark Ploger**

K- State Research and Extension Pratt County

### *Treasurer*

**Kelly Mason**

First National Bank

### *Past President*

**Eric Strobel**

KMMM 1290 Radio

### **Jeremie Estes**

BTI Pratt

### **Mark Graber**

Quality Tech Computers

### **Cheri Hitt**

Farm Bureau Financial Services

### **Dave Howard**

City of Pratt

### **Kristina Kaufman**

Bodies Elite

### **Michael Keiser**

High Plains Farm Credit

### **Monty Matthews**

Stanion Wholesale Electric Company

### Official Publication

The Pratt Area Chamber of Commerce's *Chamber News* is published monthly by the Pratt Area Chamber of Commerce, 114 N. Main, Pratt, KS, 67124.

Brian Hoffman, editor

Amy Govert-Larson, layout and design



The 17th annual Mid-Year Meeting for Kansas Independent Oil & Gas Association (KIOGA) included a trade show at Pratt Community College on April 23, 2009. Sponsored, in part, by the Pratt Area Chamber of Commerce, the meeting brought some 150 oil and gas professionals to the Pratt.

**VISIT US ONLINE AT  
PRATTKAN.COM!**

## DOWNTURN RESOURCES AVAILABLE THRU STATE LIBRARY

The State Library of Kansas staff has used their professional skills to assemble a virtual library of information to help Kansans as they weather the economic downturn.

At <http://kslibinfo.wetpaint.com> individuals can quickly find the online tools they need to save money, find help and thrive in tough times.

Over the past several weeks, the State Library staff used a wiki to launch assembled resources to assist

individuals – whether it's finding a new job, figuring out how to refinance a home mortgage, where to turn if health insurance has been lost through a job termination or how to weather current economic conditions. And, the site is evolving because other agencies or individuals can contribute sites to the wiki that can help in these rough times.

“Categories that the State Library has focused on include employment and training, finances, housing, health,

families, and seniors,” explained State Librarian Christie Brandau. “We were inspired by a similar site developed by the New Jersey State Library. Putting the resources together and organizing it helps in locating the information. You could ‘Google’ all day and not find some of the sites we have assembled all in one place.”

The State Library of Kansas is located in the State Capitol building in Topeka.

## FINALLY FRIDAY! TREATS SHARED

The Pratt Area Chamber of Commerce and 54 Diner & Catering presented sweet treats to area businesses as part of *Finally Friday!* during April. The chamber staff visited Susan Page’s office at Pratt Regional Medical Center, Prairie Independent Living Resource Center, K.I.T.S. Manufacturing and Skyline Schools USD 438.

*Finally Friday!* recognizes employees of the chamber’s member businesses for their hard work. Look for the chamber to visit your office soon!

**THANK YOU**  
**54 Diner & Catering!**

**ABOVE RIGHT:** Pratt Regional Medical Center

**RIGHT:** Skyline Schools USD 438

**BELOW:** Prairie Independent Living Resource Center



**RIGHT:** K.I.T.S. Manufacturing



Pratt Area Chamber of Commerce

114 N. Main  
Pratt, KS 67124

## Save the Date!

### **Pratt Garden Club Plant Sale**

Friday, May 8 • 3-6pm  
902 N. Champa (in garage on Maple Street)  
Proceeds benefit local clubs and activities supported by the Pratt Garden Club.

### **Pratt Community Health & Resource Council**

Wednesday, May 13 • 12-1pm  
Pratt Regional Medical Center

### **Golfing for Greenbacks**

Saturday, May 16 • 9am  
Park Hills Golf Course  
Sponsored by the Pratt Public School Foundation, the 4-person scramble is a benefit for Pratt USD 382 students. Teams can register for \$160 by calling (620) 672-7541. Lunch is provided and no trail fees will be charged.

### **Day to Day Diabetes Management**

Tuesday, May 19 • 10am to 2pm  
Pratt Regional Medical Center  
Learn more about general diabetes management, medications, diet and exercise for \$10. Lunch is provided. Call Stephanie Becker at (620) 450-1425 for more information.

### **Ear Care Hearing Aid Center's Day at the Park**

Wednesday, May 20 • 12-4pm  
Lemon Park  
Families are invited to the park for food and fun with Ear Care Hearing Aid Center. Free food, games and giveaways will be provided and participants can register for a free hearing test.

### **Pilot Express Railroad**

Saturday, May 23 and Sunday, May 24 • 7-8:30pm  
Sixth Street Park  
The Pilot Club will operate their popular train from 7-8:30pm every Tuesday, Thursday, Saturday and Sunday thru August 1, 2009. The train can be rented for parties by contacting Karen Detwiler or Jeanne Carson.

### **Miss Kansas Pageant**

Monday, June 1 - Saturday, June 6  
Tickets to the Miss Kansas/Miss Kansas Outstanding Teen Competition Week are available at <http://misskansas.com/2009tickets.html>.  
*Businesses are encouraged to welcome the contestants and their families to Pratt with appropriate signage during the week of competition.*

**Pratt**  
*Has Something  
for You!*

# Golfing for Greenbacks



*Sponsored by:  
Pratt Public School Foundation*



**Saturday, May 16th**  
**Park Hills Golf Course ~ Pratt, KS**  
**4-person scramble**  
**\$160 per team ~ lunch included**  
**9:00 a.m. start**  
**Call 672-7541 to register!**

Call 620-672-7541 now to register your team or  
mail your entry to: P.O. Box 121, Pratt, KS 67124  
No trail fees will be charged. We encourage you to bring your own cart.  
If you need to reserve a cart, please let us know as soon as possible.  
40 team limit. *All proceeds benefit USD 382 students.*

# HOW DO YOU BUILD A SOLID BUSINESS?

**BRICK**

by

**BRICK**

## ■ **Technology as a Service. What is it?**

Technology as a Service, also known as TaaS, is an all-inclusive technology solution for your business, no matter how large or small! With TaaS, you get all the hardware—from printers to servers and software—and supporting services to build a reliable network. Because you do not own the equipment, the entire solution is considered a “service.” You simply pay a monthly fee and let the technology work for you! Plus, with TaaS, your investment is “refreshed” every three to five years, so you don’t have to worry about keeping up with technology.

## ■ **Can Nex-Tech provide my business with TaaS?**

Yes! Let Nex-Tech’s experts manage your technology needs, and allow your employees to focus on your business. With TaaS, Nex-Tech owns and manages the computer infrastructure, serving your hardware and software needs by providing reliable service and product upgrades. Nex-Tech will keep you informed of the latest technologies to keep your business running at full speed. Utilizing Intel’s vPro Technology, Nex-Tech can even provide remote access for immediate support—resulting in less downtime!

## ■ **Total Voice**

An extension of TaaS, Nex-Tech can also provide a complete phone system that matches your company’s communication needs. Let Nex-Tech own all the hardware and provide the services. For a monthly fee, all you have to worry about is running your business.

## ■ **Big Benefits of TaaS and Total Voice**

- Manage your technical services at a budgeted monthly rate.
- Implement the latest technologies with consistent and reliable upgrades.
- Take advantage of technology refreshes every three to five years.
- Guarantee commitment of support and service.
- Eliminate downtime, reduce unexpected costs and increase productivity.

**For a free consultation, call 877-625-7872 and a Nex-Tech Sales Representative will show you how TaaS and Total Voice will work for your business!**

**NEX-TECH**  
A Rural Telephone Company

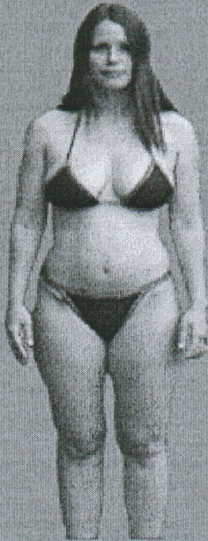
GOOD HEALTH & WELLNESS NATURALLY

KEMPTON CHIROPRACTIC CLINICS

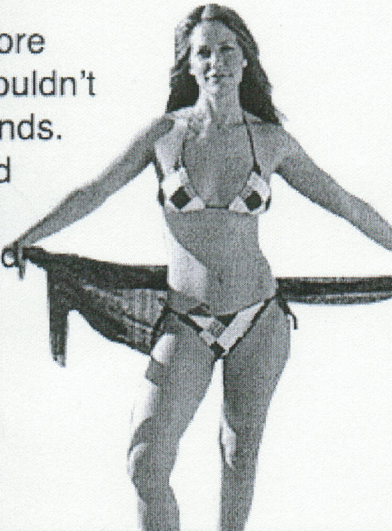


# NULEAN WELLNESS WEIGHT LOSS CLEANSE NOW AVAILABLE

**"I looked in the mirror and started to cry..."**



It was six weeks before my wedding. I just couldn't lose that last 20 pounds. I called my sister and told her the wedding was off. Then a friend told me about a revolutionary new weight-loss system that worked fast and was easy to do..."



**Sky Burness lost 20 pounds and 51 inches in six weeks.**

**STAY IN THE GAME WITH**  
**Chiropractic**

**"I did a lot of things to stay in the game, but regular visits to my chiropractor were among the most important."**

NFL Football Legend & "Dancing with the Stars" Celebrity  
— **JERRY RICE**

Jerry Rice, one of the game's most durable players, a 13-time Pro Bowl football player who owns 38 career records and three Super Bowl rings, shares his positive experiences with chiropractic care.

"I am proud to communicate with the American public about the value of chiropractic care. Professional football is a very rough and vigorous sport, and I attribute my longevity and durability to a vigorous exercise program and chiropractic adjustments. Chiropractic gave me the edge to succeed, not only on the gridiron but also on the dance floor."

He continues to rely upon chiropractic adjustments to keep himself healthy and active.

PHOTO BY MARCY WALCY

Learn the facts about chiropractic care and its vital role in America's well being. Visit [www.yes2chiropractic.com](http://www.yes2chiropractic.com)

Foundation for  
**Chiropractic Progress**